

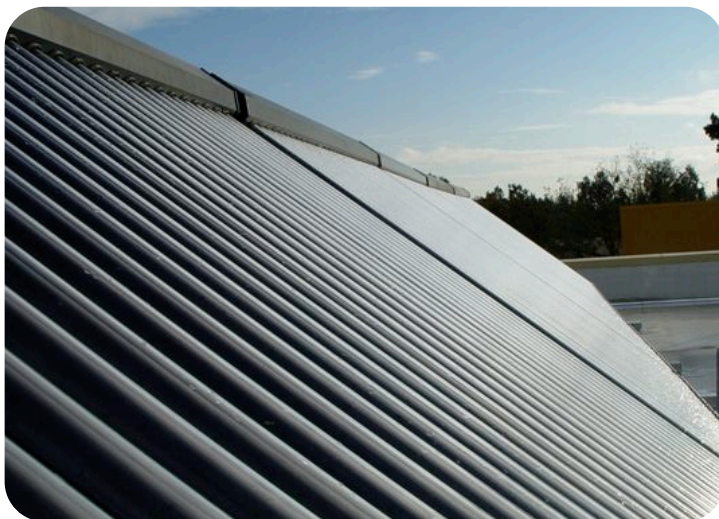
# Case Study

## College Dormitory



**Overview:** Forty Apricus AP-30 solar collectors were installed by J.R. Pierce Plumbing Company on the roof of a new, 4 story, energy efficient dormitory building at California State University - Sacramento. The four story building is home to 610 university students and is used year round. The direct flow system is used to pre-heat the building's domestic hot water before it enters the water heating system.

In designing the system to meet LEED requirements J.R. Pierce chose Apricus because "the competition could not do that for what the university had budgeted for." The collectors were chosen due to the fact they can deliver more hot water during the winter when the building is full and the demand is the greatest. Everyone involved worked diligently to ensure that the university ended up with a quality system at an affordable price.



### Project Description:

<b>Property Name:</b>	California State University
<b>Location:</b>	Sacramento, CA
<b>System Type:</b>	Direct Flow, Domestic Hot Water
<b>Array Size:</b>	40 Apricus AP-30 Collectors



### Apricus APSE-30:

#### Physical Specifications:

Dimensions:	2.0m x 2.2m / 78.9" x 86.4"
Aperture Area:	2.98m <sup>2</sup> / 32.05ft <sup>2</sup>
Gross Area:	4.15m <sup>2</sup> / 44.76ft <sup>2</sup>
Gross Dry Weight:	95kg / 209lb
Fluid Capacity:	710ml / 24 fl oz
Max Pressure:	800kPa / 116psi

#### Materials of Construction:

Evacuated Tubes:	Borosilicate 3.3. Glass
Absorber Coating:	Aluminum Nitrate
Heat Pipes:	High Purity Copper
Mounting Frame:	439 Stainless Steel
Manifold Casing:	5005-H16 Anodized Aluminum

#### Warranty:

Manifold & Frame:	15 years
Tubes & Heat Pipes:	10 years

### Contact Information:

**Apricus Inc:** 370 State Street, Unit 2  
North Haven, CT 06473 USA  
T: 1-800-458-2634

**J.R. Pierce:** 3610 Cincinnati Avenue  
Rocklin, CA 95765 USA  
T: 916-434-9554